



The BetterView Screen offers many of the key features that our other screen solutions have, all in one package! The BetterView utilizes superior quality aluminum and UV-resistant fiberglass mesh, both of which will endure the test of time. It is designed and built for many door and window applications.

	Width	Height
Pull Across:	6'	8'
Pull Down:	6'10"	5'

Pull Across: 6' 8'

Pull Down: 6'10" 5'

Benefits:



Compact Design



Clear Vision



Insect Control

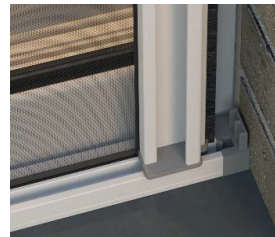


Custom Build



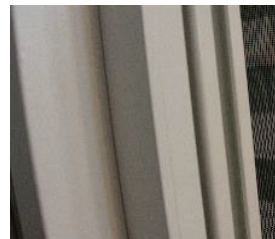
Discrete Design

The sleek, 2" housing profile fits harmoniously in almost any architectural setting.



Captured Mesh

Specialty equipment welds the mesh to the zipper. The tracks capture the zippers, and the mesh is retained at all times. No blowouts, frayed mesh or animals on the loose.



Latching Slide Bar

A full-length pull-bar provides simple, "one-touch" latch and release functionalities without the need for magnets, pulleys or cables.



Speed Reducer

Speed reducing, smooth-glide technology allows the screen to "self-retract" at a controlled speed from start to finish. No more doors slamming closed!



Warranty

BetterView is covered by a limited life-time warranty.

VISTA VIEW™



The VistaView™ Screen operates effortlessly from side to side. It works perfectly on a variety of door configurations, sizes and finishes.

	Width	Height
Singles Up To	14'6"	11'
Doubles Up To	29'	11'

Benefits:



100mph
Wind Tested



Clear
Vision



Insect
Control

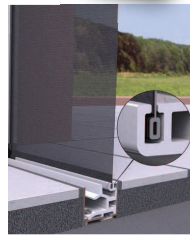


Convenient
Auto-Stop



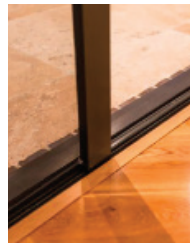
Auto-Stop

Homeowners have full control of the screen with the convenience of unlimited brake points. The pull-bar automatically stops when the handle is released.



Captured Mesh

Specialty equipment welds the mesh to the zipper. The tracks capture the zippers, and the mesh is retained at all times. No blowouts, frayed mesh or animals on the loose.



Recessed Track

VistaView™ screens can be recessed, providing a smooth transition between spaces with a flush appearance.

Wizard
Screen Solutions

*A View Towards
Excellence*